

Santa Fe County, New Mexico

Fiscal Year 2010 Budget



Governing Body

Harry B. Montoya	Commissioner, District 1
Virginia Vigil	Commissioner, District 2
Michael D. Anaya	Commissioner, District 3
Kathy Holian	Commissioner, District 4
Liz Stefanics	Commissioner, District 5

Elected Officials

Domingo Martinez	County Assessor
Valerie Espinoza	County Clerk
Greg Solano	County Sheriff
Victor Montoya	County Treasurer
Mark Basham	County Probate Judge
Jeffrey Ludwig	County Surveyor

Administrative Staff

Roman Abeyta	County Manager
Penny Ellis-Green	Assistant County Manager
Stephen Ross	Legal – County Attorney
James Lujan	Director, Growth Management
Joseph Gutierrez	Director, Community Services
Annabelle Romero	Director, Corrections

Santa Fe County, New Mexico Fiscal Year 2010 Budget

SANTA FE COUNTY

Post Office Box 276 – 102 Grant Avenue
Santa Fe, NM 87504-7208

Phone 505-986-6200
1-800-894-7028

Fax 986-6206



VISION STATEMENT

Santa Fe County government strives to be a responsive, cutting-edge organization which has integrated the vision of its citizens, employees and elected officials. Santa Fe County is strongly committed to protecting and preserving our cultural traditions, pristine resources, and diverse communities. Our administration is dedicated to the health, safety, and welfare of the public we serve and to ensure the quality of life and preservation of resources for future generations. Citizen Involvement is an essential and integral component to the success of Santa Fe County government. Santa Fe County is committed to working collectively with constituents to solve problems confronting our communities as we progress in the twenty-first century.

MISSION STATEMENT

The mission of Santa Fe County Administration is to provide responsive public services based upon the needs of our constituents as set forth in the policies and ordinances established by the Board of County Commissioners. Our mission is carried through the collective efforts of a motivated and professional workforce and our citizens.

Santa Fe County, New Mexico

Fiscal Year 2010 Budget



How to use this Budget Document

This budget document is intended to provide information about Santa Fe County, its Government, and services, and to serve as a reference to county revenue, funds, and expenditures.

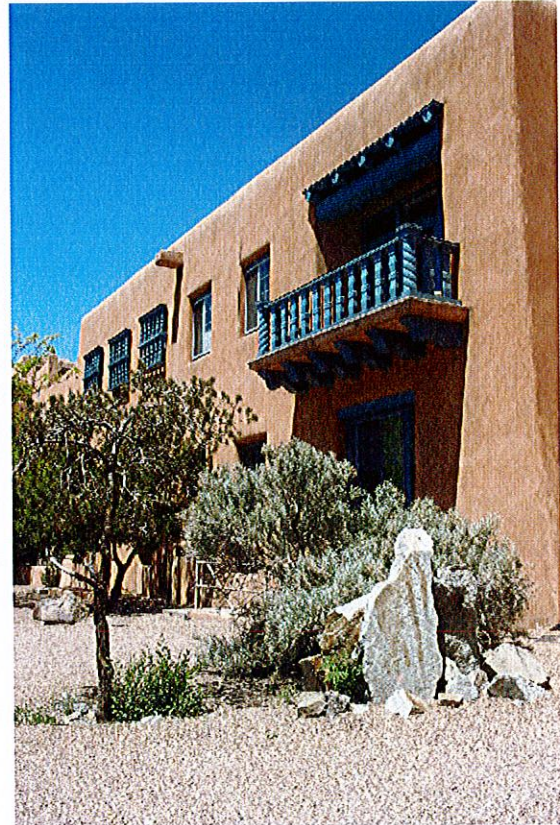
The Table of Contents and Index list all subjects covered in this document by page number. The document is divided into the following sections.

Section 1: The County Manager's Fiscal Year 2010 Budget Message, County Budget Resolutions, Budget Certification, and the Budget Recap.

Section 2: Facts about Santa Fe County

Section 3: The Budgeting Process and Financial Policy

Section 4: Revenue and Funds detail



Santa Fe County Administration Building

Section 5: Debt Obligation Analysis and amortization schedules for all County indebtedness.

Section 6: Capital, including the General Fund Capital Package (maintenance and equipment capital), and Capital Project budgets.

Section 7: Organization Budgets including overviews containing service descriptions, Fiscal Year 2009 accomplishments, Fiscal 2010 objectives, and budget detail with position listings.

Section 8: Supplemental data, including detail on County Commissioners, and meetings, property taxes, and a glossary of terms.

SANTA FE COUNTY
FISCAL YEAR 2010 BUDGET



TABLE OF CONTENTS

I. Document Introduction

County Manager Budget Message	Page	I-1-22
DFA Letter of Final Budget Approval	Page	I-23
Resolution 2009-103 Adopting Fiscal Year 2010 Interim Budget	Page	I-24
Resolution 2009-130 Adopting Fiscal Year 2010 Final Budget	Page	I-25
Supporting Documentation	Page	I-26-31
Fiscal Year 2010 Budget Recap – DFA Form	Page	I-32-33
Fiscal Year 2010 Budget Recap with Beginning Cash Derivation	Page	I-34
Recap Determination of Cash Balances	Page	I-35

II. Introduction to Santa Fe County

Demographics	Page	II-2-5
Economic Data	Page	II-6-8

III. The Budgeting Process

Overview	Page	III-2
Summary of Budgetary Financial Policies and Goals	Page	III-3
A Balanced Budget	Page	III-4
Basis for Determining Revenue	Page	III-5
Capital Spending / Cash Carryover	Page	III-6
Planning and Budget Development	Page	III-7
Fiscal Year 2010 Budget – Short Term Priorities	Page	III-9
Fiscal Year 2010 Budget Differences from the Prior Year	Page	III-10
Baseline and Building Blocks	Page	III-11
The Annual Budget Calendar	Page	III-12
Budget Management	Page	III-13
Budget and Financial Policy	Page	III-14-25
Budget Responsibilities	Page	III-26

IV. Fund Level Summaries

Fund Type Descriptions	Page	IV-2
Santa Fe County Fund Listing	Page	IV-3
Revenue Sources	Page	IV-4-24
All Funds – Actual Expense / Cash Basis	Page	IV-25-26
Total Budget by Fund Type	Page	IV-27-28
General Fund	Page	IV-29-30
Special Revenue Funds	Page	IV-31-32
Capital Improvement Funds	Page	IV-33-34
Debt Service Funds	Page	IV-36-37
Enterprise Funds	Page	IV-38-39
Fund Sources and Uses – Each Fund	Page	IV-40-64
Table of All Funds and Composite Budget	Page	IV-65-67
Fiscal Year 2010 Operating Transfers	Page	IV-68

SANTA FE COUNTY
FISCAL YEAR 2010 BUDGET



TABLE OF CONTENTS

V. Debt Obligations Analysis

Bonding Capacity for Gross Receipts Tax Revenue	Page	V-2-3
Bonding Capacity for General Obligation Revenue	Page	V-4
General Obligation Bonds – Outstanding Debt	Page	V-5
Individual Debt Schedules	Page	V-6-12
Fiscal Year 2010 Debt Schedule	Page	V-13
Fiscal Year 2011 Debt Schedule	Page	V-14

VI. Capital Improvements

Individual Capital Project Budgets	Page	VI-2-3
Capital Expenditures Definition, Growth in Capital Projects	Page	VI-4
Capital Budgets – the New Format	Page	VI-5-6
Capital Improvement Project History and Budget		
North County (including La Puebla and Pojoaque)	Page	VI-7-10
City of Santa Fe Surrounding Area		
(includes La Cienega, Agua Fria and El Dorado)	Page	VI-11-15
South County	Page	VI-16-17
Water Projects	Page	VI-18-23
Open Space Projects	Page	VI-24-29
Fire Department	Page	VI-30-32
Facilities (includes Public Works, Judicial Court and Infrastructure)	Page	VI-33-41
Roads	Page	VI-42-47
Housing	Page	VI-48-49
County General Fund Capital Package	Page	VI-50
Road Fund Capital Package	Page	VI-50

VII. Organizational Budgets

County Organization	Page	VII-3
Department Budgets - Summary	Page	VII-4
Budget Changes in Full-Time Positions	Page	VII-5
County Departments / Organizations / Elected Offices		
County Management	Page	VII-6-15
Administrative Services Department	Page	VII-16-21
Growth Management Department	Page	VII-22-31
Community Services Department	Page	VII-32-49
Corrections Department	Page	VII-50-57
Public Safety (group of organizations)	Page	VII-58-67
Elected Offices	Page	VII-68-75
Non-Departmental Budgets	Page	VII-76

VIII. Supplemental Schedules and Summaries

Santa Fe County Map with Commission Districts	Page	VIII-2
Board of County Commissioners	Page	VIII-3
Regularly Scheduled Monthly Meetings	Page	VIII-4
County Offices and Departments	Page	VIII-5
Property Tax Yield Control Calculation	Page	VIII-6-7
Property Tax History – Valuation, Billing, and Collection	Page	VIII-8
Property Tax Valuation – Tax Year 2009	Page	VIII-9-11
Acronyms used in the Budget and County	Page	VIII-12
Glossary	Page	VIII-13
Budget Authors	Page	VIII-22



Santa Fe (Spanish, "Holy Faith"; full form: La Villa Real de la Santa Fé de San Francisco de Asís, English: Royal City of the Holy Faith of St. Francis of Assisi) is the largest city and the county seat of Santa Fe County. The City of Santa Fe had a population of 62,543 at the 2000 census. As of the 2005 census estimate the population was 70,631, making it New Mexico's third-largest city. It is the principal city of the Santa Fe, New Mexico Metropolitan Statistical Area which encompasses all of Santa Fe County. The elevation of Santa Fe is nearly 7,000 feet (2,100 meters) above sea level compared with approximately 5,352 ft (1,600 m) for nearby Albuquerque.

