

Santa Fe County Board of County Commissioners February 8, 2011

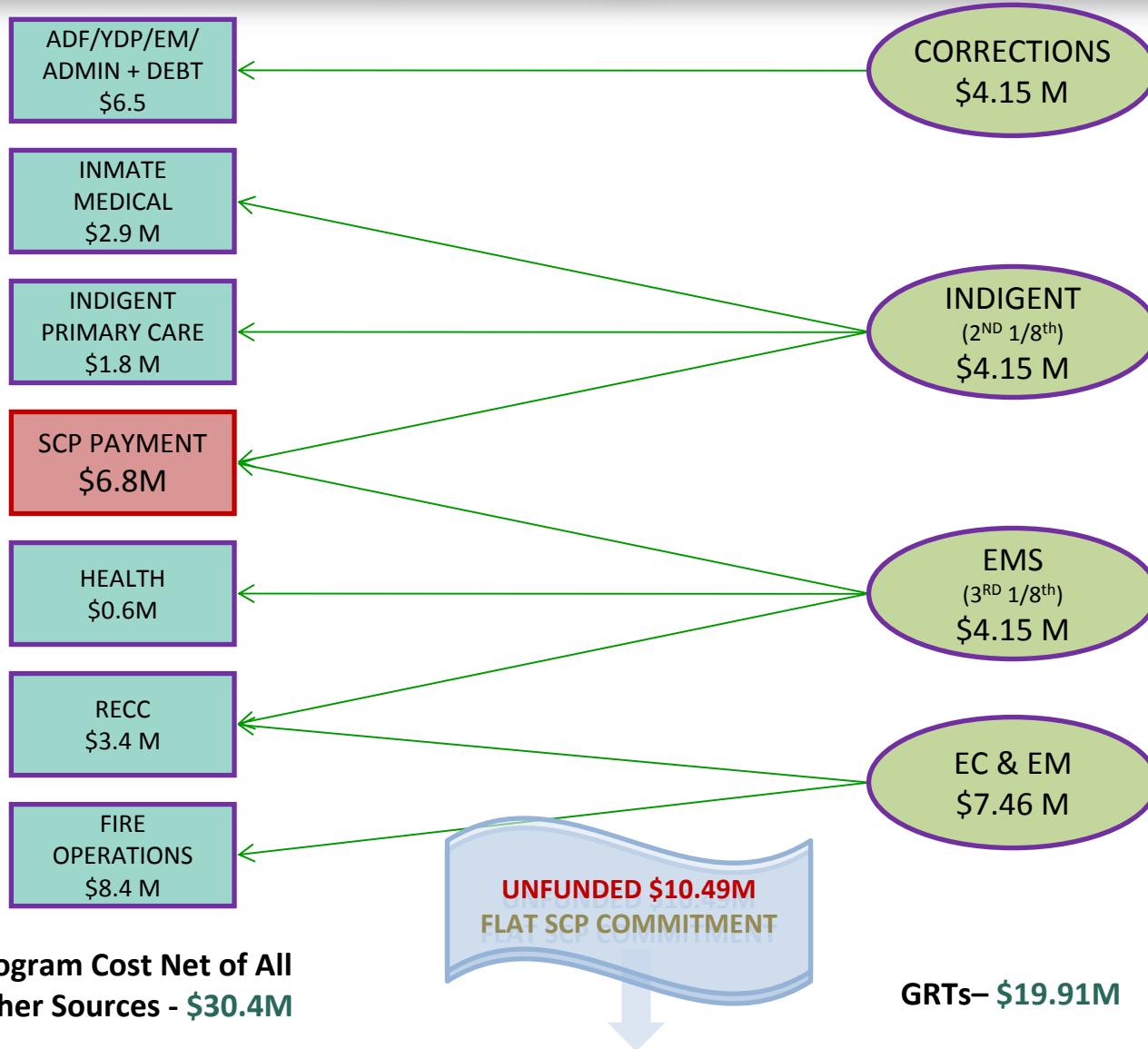


Sole Community Provider Commitment
and
Related Budget Issues

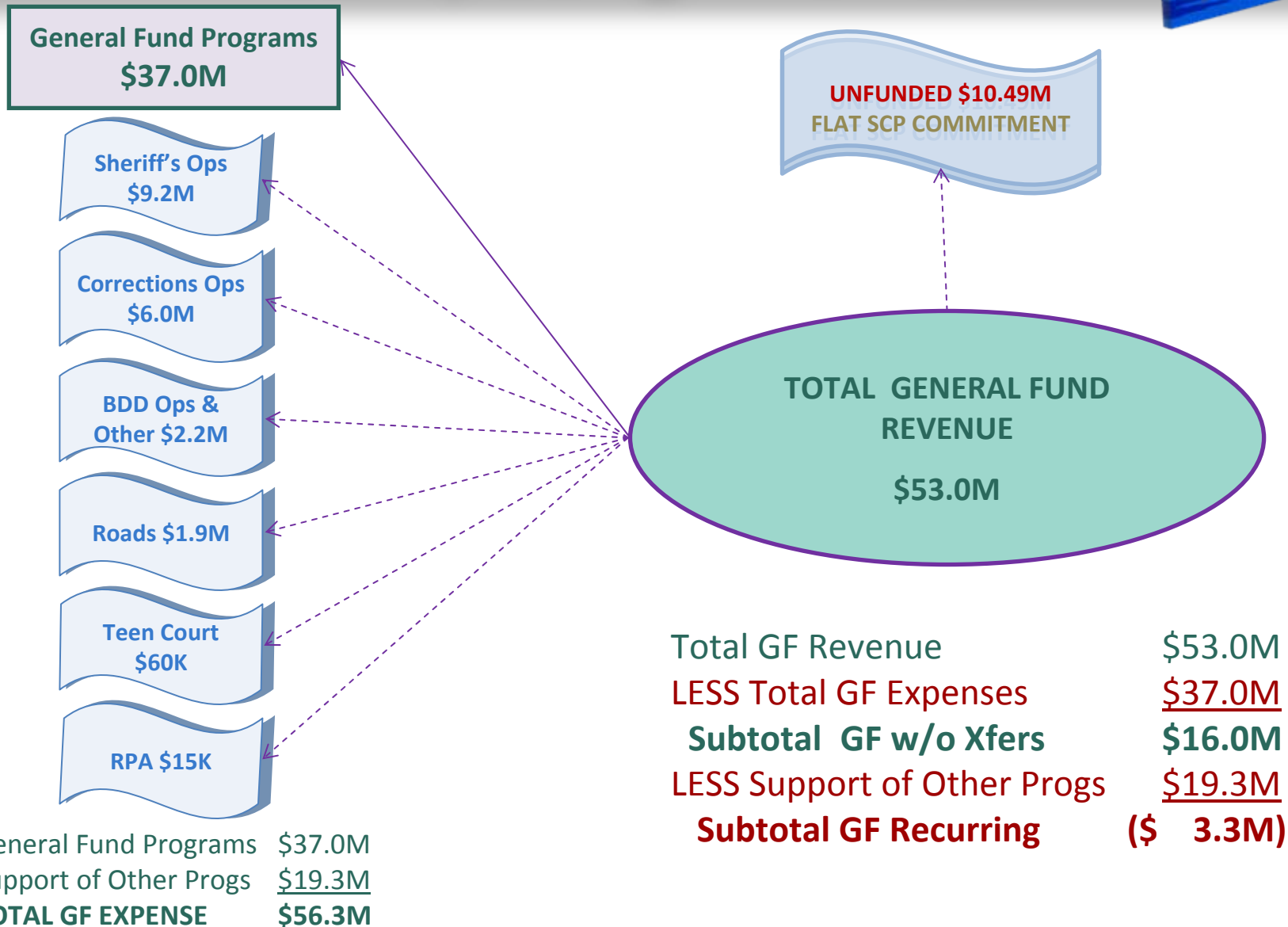




Competing Priorities



Competing Priorities



Competing Priorities – Summary

SCP RELATED

(Recurring)

Total Revenue	\$19.91
Total Expense	<u>(\$30.40)</u>
SHORTFALL	(\$10.49)

GENERAL FUND

(Recurring)

Total Revenue	\$53.0M
Total Expense	<u>(\$37.0M)</u>
EXCESS	\$16.0M
Support of Other	<u>(\$19.3M)</u>
SHORTFALL	(\$ 3.3M)

COMBINED GF & SCP RELATED (Recurring)

TOTAL REVENUE	\$72.91M
TOTAL EXPENSE	<u>(\$86.70M)</u>
COMBINED TOTAL SHORTFALL	(\$13.79M)

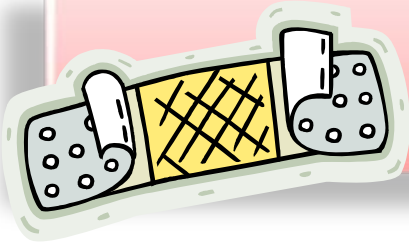
Cash Balances – The Whole Picture



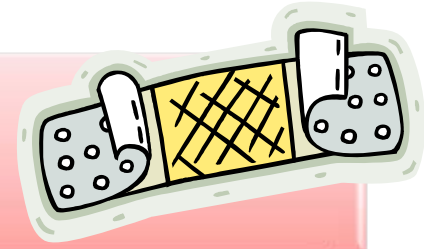
FY 2012 Estimated Beginning Cash Balances

	Cash Balance	Reserve Req.	Usable Balance
Corrections Fines & Forfeitures	\$ 260,686	\$ 22,917	\$ 237,769
Correctional GRT	\$ 656,438	\$ 356,250	\$ 300,188
Indigent Funds (1/8 GRT & Prim. Care)	\$ 816,818	\$ 432,129	\$ 384,689
Fire Excise Tax (sunsetted)	\$ 431,102	\$ 284,373	\$ 146,729
EMS Funds (1/8 GRT & Health Care)	\$ 644,453	\$ 338,638	\$ 305,815
RECC (unrestricted portion)	\$ 314,244	\$ 283,877	\$ 30,367
EC & EM GRT* (1/4 cent)	<u>\$ 3,939,498</u>	<u>\$ 774,675</u>	<u>\$3,164,823</u>
Subtotal SCP Related	\$7,063,239	\$2,492,859	\$4,570,380
Road Fund	\$ 313,413	\$ 190,051	\$ 123,362
Sheriff's Operations	<u>\$ 733,152</u>	<u>\$ 732,621</u>	<u>\$ 532</u>
Subtotal GF Supported	\$1,046,565	\$ 922,672	\$ 123,894
TOTAL SPECIAL REVENUES	\$8,109,804	\$3,415,531	\$4,694,274
GENERAL FUND	<u>\$30,414,926</u>	<u>\$20,754,896</u>	<u>\$9,660,030</u>
(less obligated Infrastructure Funding)			
TOTAL GF & SCP RELATED	\$38,524,730	\$24,170,424	\$14,354,304

* Known as Fire Operations



Plan for Using Cash



What if:

Spend down cash reserves over 2 years:
\$14.4 million / 2 years = \$7.2 million /year

Recurring GF Shortfall	\$ 3.3M
FY12 Critical Capital Needs	\$ 2.0M
SCP Rel. Support Needed	<u>\$10.49M</u>
Total Cash Needed	\$15.79M

Planned Use of Cash (\$7.2M)

Reduced Expenses/Increased Revenue

Needed in FY 12 \$8.59M

**General Fund Cash Reserves Depleted
in Fiscal Year 2013**

What if:

Spend down cash reserves over 3 years:
\$14.4 million / 3 years = \$4.8 million /year

Recurring GF Shortfall	\$ 3.3M
FY12 Critical Capital Needs	\$ 2.0M
SCP Rel. Support Needed	<u>\$10.49M</u>
Total Cash Needed	\$15.79M

Planned Use of Cash (\$4.8M)

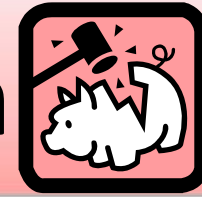
Reduced Expenses/Increased Revenue

Needed in FY 12 \$10.99M

**General Fund Cash Reserves Depleted
in Fiscal Year 2014**



Plan for Using Cash



PROS

- 👍 Would reduce the amount of cuts needed to balance the budget.
- 👍 Would reduce the need to cut/eliminate programs.
- 👍 Would reduce the impact to staff.
- 👍 Would allow time for planning should major reductions be needed.

CONS

- 👎 Depends on the economy improving by the time the cash runs out.
- 👎 Still requires some cuts to programs many of which can not sustain additional cuts without impacting services.
- 👎 A major expense or revenue downturn would derail the plan.

Suggestions for SCP

Sole Community Provider Commitment and Related County Operations		
Current Commitment & Use of Cash		
		FY2011 Current
Special Revenue (GRTs)		\$ 8,550,000
General Fund		\$ 1,167,529
Total Revenue		\$ 9,717,529
Health Adm	EMS	\$ 283,822
Indigent	Indigent	\$ 1,835,548
MCH	EMS	\$ 58,206
Mobile Health Van	EMS	\$ 209,828
Seniors	GF	\$ 898,219
County Fair	GF	\$ 207,610
Jail Medical	Indigent	\$ 2,000,000
Teen Court	GF	\$ 61,700
Subtotal Health Related		\$ 5,554,933
RECC	EMS	\$ 3,406,525
SCP		\$ 6,861,795
Total Expense		\$ 15,823,253
Cash-Surplus/Need		\$ (6,105,724)

Reflects current \$6.861M SCP Commitment

Reflects use of cash totaling \$6.1 M

Suggestions for SCP – Option 1

		Option # 1 FY2012
Special Revenue (GRTs)		\$ 8,122,500
General Fund		\$ 1,132,654
Total Revenue		\$ 9,255,154
Health Related		
Health Adm	EMS	\$ 275,307
Indigent	Indigent	\$ 1,780,482
MCH	EMS	\$ -
ParaTransit	EMS	\$ 91,000
Mobile Hlth Van	EMS	\$ 190,000
Seniors	GF	\$ 871,272
County Fair	GF	\$ 201,382
Jail Medical	Indigent	\$ 2,608,000
Teen Court	GF	\$ 60,000
Subtotal Health Related		\$ 6,077,443
RECC		
Subtotal RECC	EMS	\$ 3,304,329
SCP		\$ 1,106,807
Total Expense		\$ 10,488,579
Cash-Need		
Cash-Surplus/Need		\$ (1,233,425)

- ▶ Reflects an SCP Commitment of \$1.1 M resulting total base funding of \$3.6M
- ▶ Programs were cut by 3%, reduced the Van to \$190K and cut the MCH Program
- ▶ Increased Jail Medical to \$2.6M + Paratransit at \$91K
- ▶ SCP based on FY'10 Indigent Claims

Breakdown by Hospital:

Christus St. Vincent	\$945,500
Espanola	\$145,065
Los Alamos	\$ 16,242

Suggestions for SCP – Option 2

Special Revenue (GRTs)		\$ 8,122,500
General Fund		\$ 1,132,654
Total Revenue		\$ 9,255,154
Health Adm	EMS	\$ 275,307
Indigent	Indigent	\$ 1,780,482
MCH	EMS	\$ -
ParaTransit	EMS	\$ 91,000
Mobile Hlth Van	EMS	\$ 190,000
Seniors	GF	\$ 871,272
County Fair	GF	\$ 201,382
Jail Medical	Indigent	\$ 2,608,000
Teen Court	GF	\$ 60,000
Subtotal Health Related		\$ 6,077,443
Subtotal RECC	EMS	\$ 3,304,329
SCP		\$ 2,108,307
Total Expense		\$ 11,490,079
Cash-Surplus/Need		\$ (2,234,925)

- ☛ Reflects an SCP Commitment of \$2.1M resulting in total base funding of \$6.9M
- ☛ Programs were cut by 3%, reduced the van to \$190K, cut MCH program
- ☛ SFC funds Jail Medical at add'l \$608K and ParaTransit at \$91K
- ☛ SCP based on FY'11 Indigent Claims

Breakdown by Hospital:

Christus St. Vincent	\$1,947,000
Espanola	\$ 145,065
Los Alamos	\$ 16,242

Suggestions for SCP – Option 3

		Option # 3 FY2012
Special Revenue (GRTs)		\$ 8,122,500
General Fund		\$ 1,132,654
Total Revenue		\$ 9,255,154
Health Related		
Health Adm	EMS	\$ 275,307
Indigent	Indigent	\$ 1,780,482
MCH	EMS	\$ -
Mobile Hlth Van	EMS	\$ 190,000
Seniors	GF	\$ 871,272
County Fair	GF	\$ 201,382
Jail Medical	Indigent	\$ 2,000,000
Teen Court	GF	\$ 60,000
Subtotal Health Related		\$ 5,378,443
RECC		
Subtotal RECC	EMS	\$ 3,304,329
SCP		
SCP		\$ 2,870,807
Total Expense		\$ 11,553,579
Cash-Surplus/Need		
Cash-Surplus/Need		\$ (2,298,425)

- ◆ Reflects an SCP Commitment of \$2.87M resulting in total base funding of \$9.4M
- ◆ Programs were cut by 3%, reduced the van to \$190K, cut MCH program
- ◆ Reflects Jail Medical at \$2.0M
- ◆ SCP based on FY'11 Indigent Claims + direct services provided by the hospital of \$2.5M

Breakdown by Hospital:

Christus St. Vincent	\$2,709,500
Espanola	\$ 145,065
Los Alamos	\$ 16,242

Suggestions for SCP – Option 4

		Option # 4 FY2012
Special Revenue (GRTs)		\$ 8,122,500
General Fund		\$ 1,132,654
Total Revenue		\$ 9,255,154
Health Adm	EMS	\$ 275,307
Indigent	Indigent	\$ 1,780,482
MCH	EMS	\$ -
ParaTransit	EMS	\$ 91,000
Mobile Hlth Van	EMS	\$ 190,000
Seniors	GF	\$ 871,272
County Fair	GF	\$ 201,382
Jail Medical	Indigent	\$ 2,541,000
Teen Court	GF	\$ 60,000
Subtotal Health Related		\$ 6,010,443
Subtotal RECC	EMS	\$ 3,304,329
SCP		\$ 2,639,670
Total Expense		\$ 11,954,442
Cash-Surplus/Need		\$ (2,699,288)

- Reflects SCP Commitment of \$2.6M = total base funding of \$8.6M
- Programs were cut by 3%, reduced the van to \$190K, cut MCH program
- SFC funds Jail Medical at add'l \$541K and ParaTransit at \$91K
- SCP based on FY'11 Indigent Claims, direct services provided by the hospital \$1.6M and Medical invoices of \$150K

Breakdown by Hospital:

Christus St. Vincent	\$2,478,363
Espanola	\$ 145,065
Los Alamos	\$ 16,242

Suggestions for SCP – Option 5

		Option # 5 FY2012
Special Revenue (GRTs)		\$ 8,122,500
General Fund		\$ 1,132,654
Total Revenue		\$ 9,255,154
Health Adm	EMS	\$ 275,307
Indigent	Indigent	\$ 1,780,482
MCH	EMS	\$ -
Mobile Hlth Van	EMS	\$ 190,000
Seniors	GF	\$ 871,272
County Fair	GF	\$ 201,382
Jail Medical	Indigent	\$ 2,000,000
Teen Court	GF	\$ 60,000
Subtotal Health Related		\$ 5,378,443
Subtotal RECC	EMS	\$ 3,304,329
SCP		\$ 3,901,207
Total Expense		\$ 12,583,979
Cash-Surplus/Need		\$ (3,328,825)

- Reflects an SCP Commitment of **\$3.9M** resulting in total base funding of **\$12.8M**
- Programs were cut by 3%, reduced the van to **\$190K**, and cut MCH program
- SCP based on FY'11 Indigent Claims + direct services provided by the hospital **\$2.4M** (leveraged **\$632K** & **\$ for \$**)

Breakdown by Hospital:

Christus St. Vincent	\$ 3,739,900
Espanola	\$ 145,065
Los Alamos	\$ 16,242

Management Recommendation

Option 4

This is a conservative recommendation based on the circumstances as they are known today. If an additional deadline extension is granted by HSD, Option 5 could be considered.



- 👍 Simplifies funding of health related programs
- 👍 Hospitals receive total base funding of \$8.6M
- 👍 Reduces SCP commitment from its current level by \$4.2M
- 👍 A reduced commitment reduces the use of cash reserves by \$4.2M (however, cuts will still be necessary)

Supplemental SCP funding to be considered if:

- Revenue increases, or
- City of Santa Fe enacts a 1/8th GRT and funds a portion of SCP (which benefits the whole community), or
- City of Santa Fe funds a portion of Regional Emergency Communication Center operations.

